

## Expert Choice 11.5™

### Power and Performance

Microsoft Project and Oracle Database integrations, those are just two of the significant new features you'll discover in Expert Choice 11.5 (EC11.5). Add to those the ability to specify participant roles, develop a hierarchy of alternatives and save multiple Resource Aligner scenarios and you are beginning to tap into the new power and performance of EC11.5.

For more than 20 years, Fortune 500 companies, federal agencies and companies like yours have relied on Expert Choice software to improve efficiency and gain a competitive advantage. Whether you are managing a project portfolio, planning your strategy, or selecting a vendor, EC11.5 continues to help you assess the benefits of your initiatives to determine those that best align with your organization's objectives for improved business performance.

Find success with EC11.5 in the following areas:

*Prioritization & Selection*

*Planning & Budgeting*

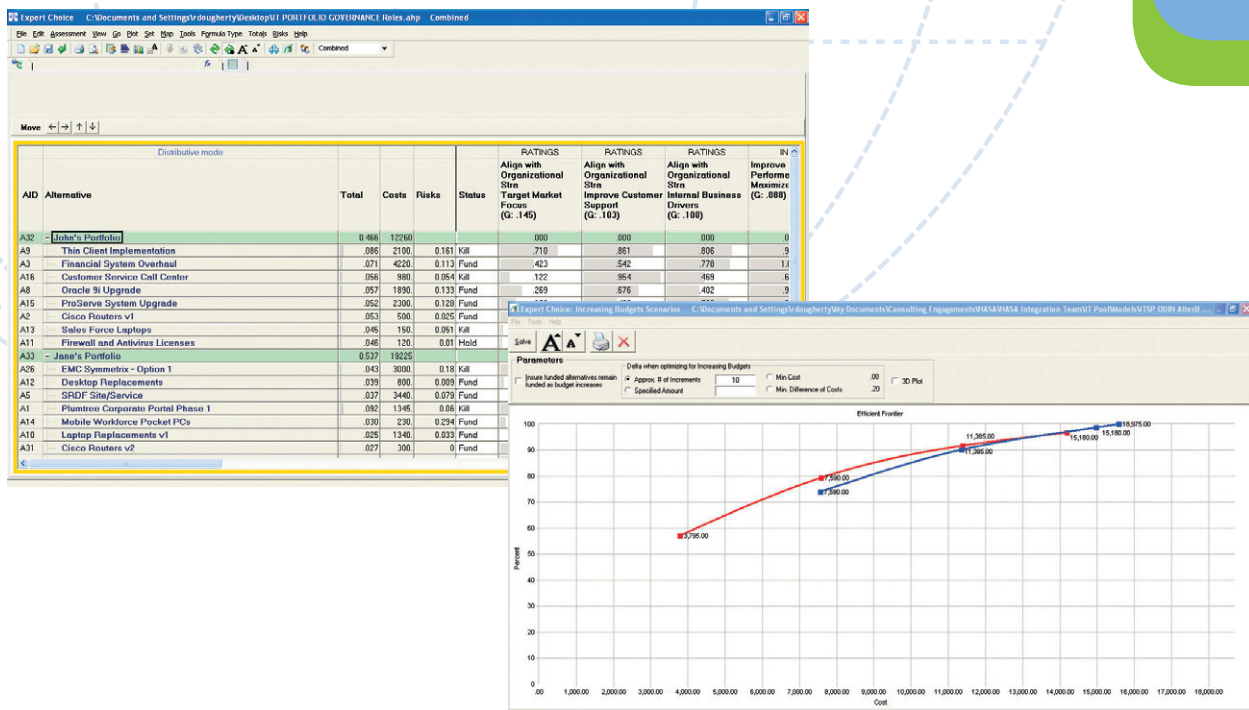
*Project & Portfolio Selection*

*Vendor & Source Selection*

*Trade Studies*

*Performance & Risk Assessment*

*Market Research*



## New Key Features

## Benefit

<p><b>Microsoft Project Integration</b></p> <ul style="list-style-type: none"> <li>• Import and export project names and project data between EC11.5's DataGrid and Microsoft Project</li> </ul>	<ul style="list-style-type: none"> <li>• Improves your time to decision by quickly getting the projects and data you need into and out of Expert Choice.</li> <li>• Allows you to set up master project files with sub projects to handle large portfolios</li> </ul>
<p><b>Oracle Databases Interface</b></p> <ul style="list-style-type: none"> <li>• Map data between EC11.5's DataGrid and the Oracle database of your choice</li> </ul>	<ul style="list-style-type: none"> <li>• Improves your time to decision by quickly getting the projects and data you need into and out of Expert Choice.</li> <li>• Provides a direct connection to Oracle without requiring an intermediate database</li> </ul>
<p><b>Hierarchy of Alternatives</b></p> <ul style="list-style-type: none"> <li>• Alternatives in the DataGrid can be organized as a hierarchy of programs and projects (i.e., a parent/child relationship)</li> <li>• Project priorities and costs roll up to the program level</li> </ul>	<ul style="list-style-type: none"> <li>• Allows clear visualization of your programs and their projects</li> <li>• Gives you better insight into which projects truly are essential for your programs</li> <li>• Permits better control over how you allocate your scarce resources</li> </ul>
<p><b>Ratings Template Library</b></p> <ul style="list-style-type: none"> <li>• Best practice ratings scale templates are available for inclusion in your decision</li> <li>• You can now create your own standard templates and save them to your library</li> </ul>	<ul style="list-style-type: none"> <li>• Provides clear, best-practice ratings templates for you to choose from</li> <li>• Saves you the time and hassle of having to create your own</li> <li>• Permits you a location to save your own commonly used templates</li> </ul>
<p><b>Specify Participant Roles for Evaluating Alternatives</b></p> <ul style="list-style-type: none"> <li>• You can now specify roles for each of your participants to determine whether or not they should have access to certain objectives or alternatives</li> </ul>	<ul style="list-style-type: none"> <li>• Allows you to ensure that participants only evaluate areas of the decision where they are truly knowledgeable, and/or have responsibility</li> <li>• Provides greater security for your decision and improves the quality of your results, making it truly an "expert" choice</li> </ul>
<p><b>Enhanced Risk Analysis</b></p> <ul style="list-style-type: none"> <li>• The DataGrid now includes a Risk column that is synchronized with the EC Resource Aligner, allowing you to more tightly integrate Risk into your decisions</li> <li>• EC Resource Aligner now permits native launching of associated risk models</li> </ul>	<ul style="list-style-type: none"> <li>• Greatly simplifies the use evaluation of risk in your decisions</li> <li>• Improves the quality of your results by bringing them closer to reality</li> </ul>
<p><b>Enhanced 3D Plotting</b></p> <ul style="list-style-type: none"> <li>• Advanced plotting capabilities are now native in the DataGrid, including the ability to plot Benefits vs. Costs vs. Risks</li> </ul>	<ul style="list-style-type: none"> <li>• Allows you to see your results in more meaningful ways</li> <li>• Permits more powerful reporting on your decisions</li> </ul>
<p><b>Enhanced Participants Table</b></p> <ul style="list-style-type: none"> <li>• The Participants Table now includes a more streamlined look and feel with easier to use functionality</li> </ul>	<ul style="list-style-type: none"> <li>• Allows you to easily load your participants from Excel without having to manually enter them</li> <li>• Permits copying of a participant table from another model into your existing model</li> </ul>
<p><b>Portfolio Scenarios</b></p> <ul style="list-style-type: none"> <li>• The EC Resource Aligner now includes a powerful scenarios capability to allow you to save different constraint sets for different scenarios (e.g., Best Case, Most Likely, Worst Case)</li> </ul>	<ul style="list-style-type: none"> <li>• Allows you to visualize multiple different scenarios on the Efficient Frontier to give you better insight into your optimized portfolio</li> </ul>

System requirements: minimum of 128 MB RAM and Pentium 500 MHz CPU, Windows 98 SE, 2000, NT4, Windows XP, and Windows Vista

*Other exciting features are available. Call Expert Choice and upgrade today!  
Otherwise, you are just guessing.*

Call us today to upgrade or visit [www.expertchoice.com](http://www.expertchoice.com)  
1501 Lee Highway • Suite 302 • Arlington, VA 22209  
[info@expertchoice.com](mailto:info@expertchoice.com) • 888.259.6400 • 703.243.5595



*otherwise you're just guessing*